

ex3

backwall: 55" w x 28" d x 92" h

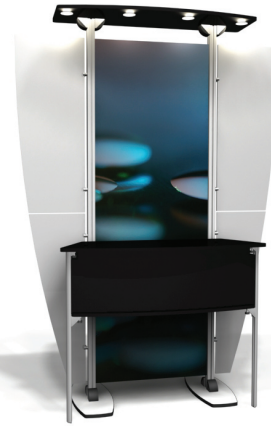
Includes:

- one piece canopy w/ four 20W-12V halogen lights
- power supply with two 12V leads & two 120V-4A outlets
- two 2-piece wings
- one counter 47" w x 16" d
- one enclosed shelf
- two GS.28.25 (ex3) graphic supports

finished graphic size:  
29.25" w x 82" h

front panel dimension:  
43.75" w x 13.125" h

Weight: 80 lbs  
Cases: 1.0



ex3.enc

backwall: 55" w x 28" d x 92" h

Includes:

- one piece canopy w/ four 20W-12V halogen lights
- power supply with two 12V leads & two 120V-4A outlets
- two 2-piece wings
- one counter 47" w x 16" d
- one enclosed shelf
- two GS.28.25 (ex3) graphic supports

finished graphic size:  
29.25" w x 50" h

front panel dimension: 43.75" w x 13.125" h      lower front panel dimension:  
43.75" w x 23.5" h

Weight: 85 lbs  
Cases: 1.0



ex3.M

backwall: 55" w x 28" d x 92" h

Includes:

- one piece canopy w/ four 20W-12V halogen lights
- power supply with two 12V leads & two 120V-4A outlets
- two 2-piece wings
- one counter 47" w x 16" d
- one enclosed shelf
- two GS.28.25 (ex3) graphic supports
- one MM2 plasma mount

finished graphic size:  
29.25" w x 82" h

front panel dimension:  
43.75" w x 13.125" h

Weight: 98 lbs  
Cases: 1.0

