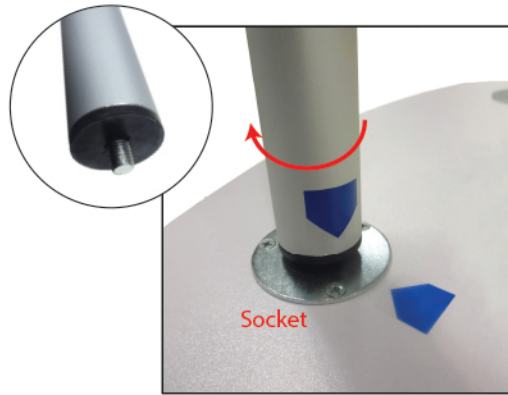


# Mobi Fabric Counter General Assembly Instructions



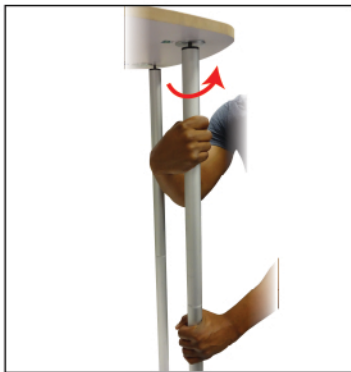
1. Place the countertop on the ground so the sockets are facing upward.



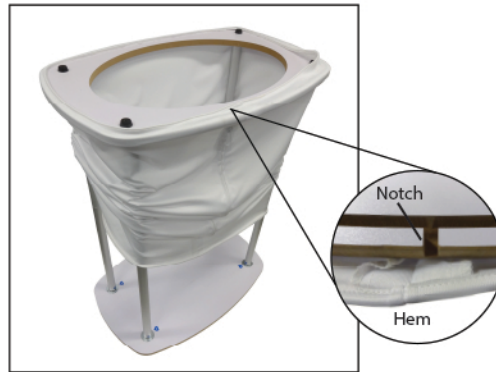
2. Using the corresponding numbers, hand-tighten the vertical support poles into the countertop sockets.



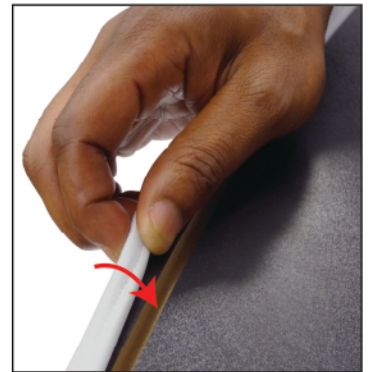
3. Slide the remaining vertical support poles into the poles mounted to the countertop.



4. Place the counter base on top of the support poles. While holding the bottom pole, hand-tighten the top pole into the base.



5. Pull the graphic over the counter, making sure the back seam of the graphic aligns with the notch.



6. Fold and tuck the silicone edge into the channel. Flip the counter and repeat.

